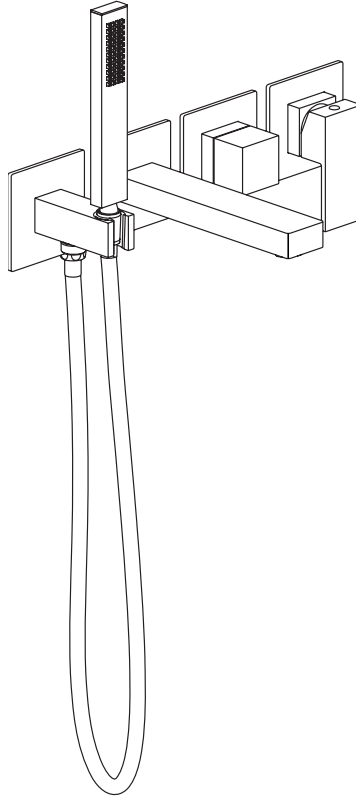


AB023000

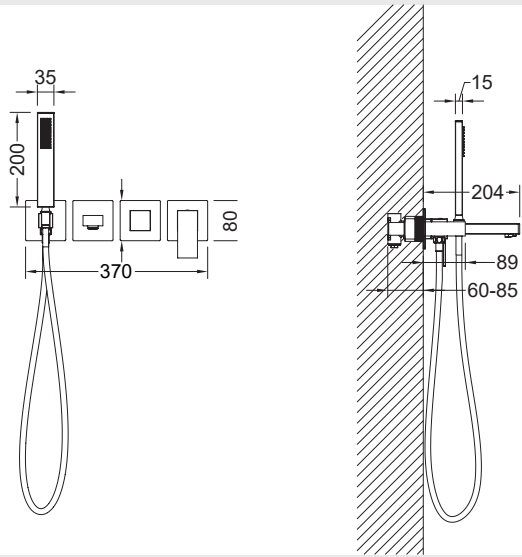
Two-function concealed shower system



Installation Manual

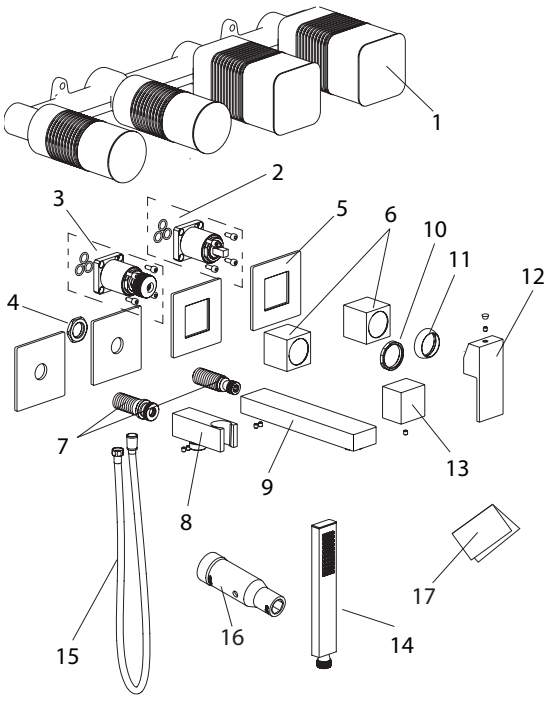
Installation / User Instructions / Warranty

Dimensions



Parts

1	Mixer body
2	Mixing valve core
3	Water diverter valve core
4	Hex nuts
5	Decorative panel
6	Decorative tube
7	Connecting pipe
8	Handheld stand
9	spout
10	Fastening nut
11	Decorative cover
12	Handle
13	Diversion valve knob
14	Hand shower
15	Hose
16	Wrench
17	Installation



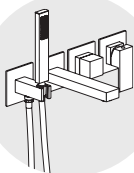
Thank you for Choosing MAXTOR



MAXTOR mission is to provide "design & quality that you can count on" bathroom products. MAXTOR's advantages to you: first-class bathroom products, fashion & enduring design, sustainable production and excellent service. MAXTOR's team will stick to our original intention, do a good job in every product, and serve every one of our customers wholeheartedly.

Installation Considerations

- MAXTOR recommends the faucet be installed by a licensed professional plumber.
- Make sure read over the instructions thoroughly before installation, and you have all tools and supplies needed to complete the installation.
- Be sure to thoroughly flush the supply pipes of dirt and debris.
- Turn off the water supply before commencing work at the stop valve.
- This is the single hole basin faucet, not include deck plate, the deck plate should be bought separately if install the faucet for three holes basin.
- Drain or a pull rod not be included also.
- The hot and cold supply hoses included with this faucet are for use with $\frac{3}{4}$ stops. If your stops are a different size, purchase adapters at your local plumbing supply store or home center. Adapters are not available from MAXTOR.



Care & Cleaning

A damp cloth and mild liquid dishwashing soap may be used, followed by rinsing with water and drying with a soft cloth. Most common household cleaners (including mild abrasives for Brushed Chrome and Platinum) can be used, when used in accordance with the manufacturers' instructions for use. However, all cleaners should be rinsed off thoroughly with water immediately after cleaning your faucet. Avoid using any harsh cleansers (e.g., steel wool or harsh chemicals) or pads/sponges that are unsafe for polished metallic surfaces. Most green, fibrous pads/sponges contain microscopic mineral particles that can scratch a faucet's finish. Cleaner manufacturers may change their formulations at any time; therefore, MAXTOR does not recommend any specific cleaner.

MAXTOR suggests the periodic application of a quality non-abrasive wax, such as car wax or furniture wax, especially for matte or textured finishes (e.g., Brushed gold, brushed Nickel Chrome or Chrome).

Removing Dried Water Spots:

A 50/50 blend of household vinegar and water can also be used for a limited amount of time, followed by rinsing with water and drying with a soft cloth.

Tools Required



1. Drill



2. Phillips Screwdriver



3. Tape Measure



4. Pencil



5. Level

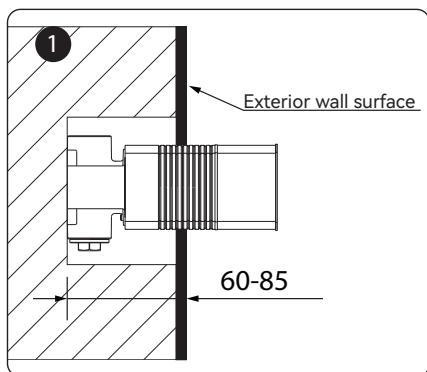
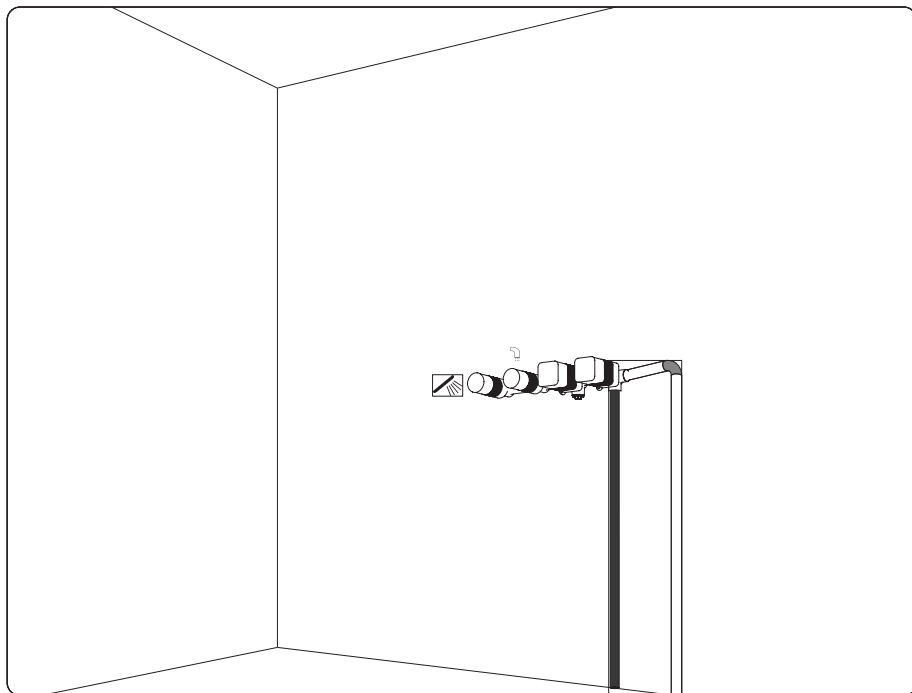


6. Plumbers tape

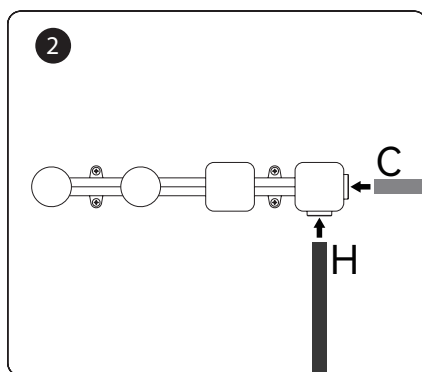


7. Silicone/Caulk Gun

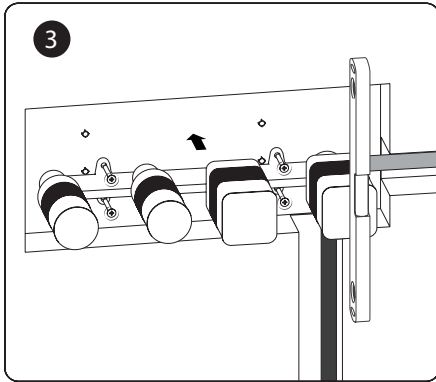
Installation Steps



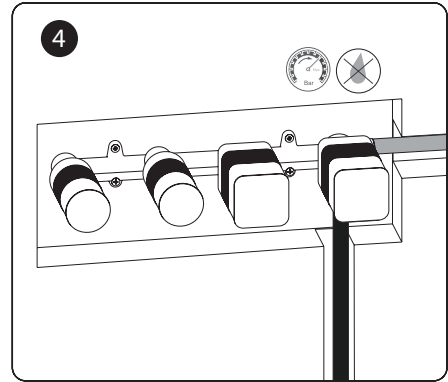
The water mixing body is installed at a depth of 60-85mm from the exterior wall surface.



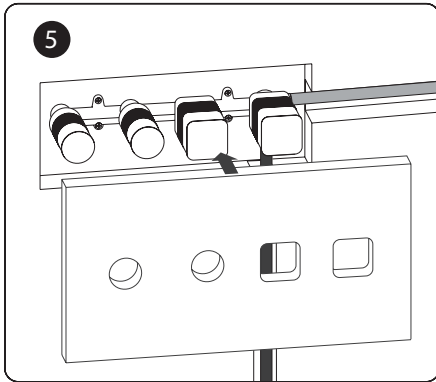
Connect the water inlet pipe to the mixing body using appropriate fittings: (C) cold water inlet and (H) hot water inlet.



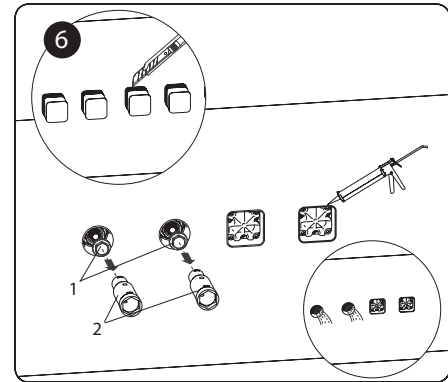
Use a level to ensure that the water mixing body is installed level, drill the corresponding fixing holes, and fix it with screws



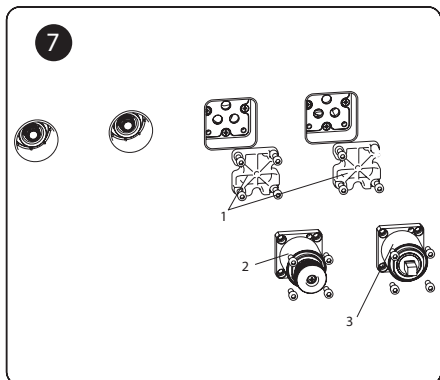
Check that all connections are tight and ensure there are no leaks



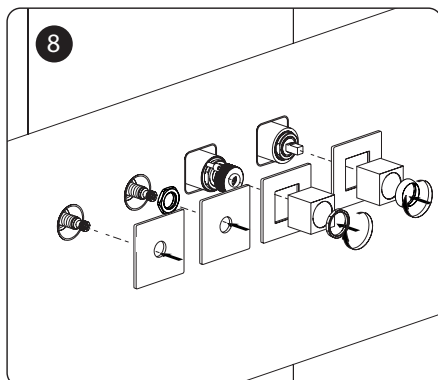
Using the template, cut a hole in the tile, then lay the tile accordingly. Do not remove the protective covers from the faucet unit until all finishing work is completed. This will protect the control unit from dust.



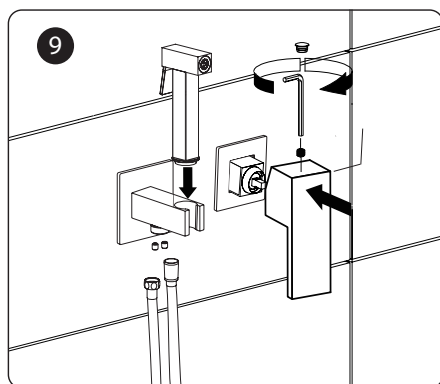
Cut off the protruding portion of the box along the cut lines on the box. Then apply a waterproof sealant around the edges of the cut. Use the wrench (2) to remove the protective plug (1). Screw the connecting pipe into the threaded hole and make sure it is tightened



Remove the protective devices of the mixing valve and water dividing valve, and then use a screwdriver to install the mixing valve core and water dividing valve core to the correct positions.

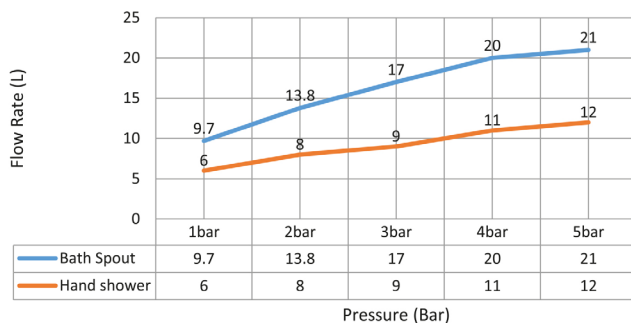


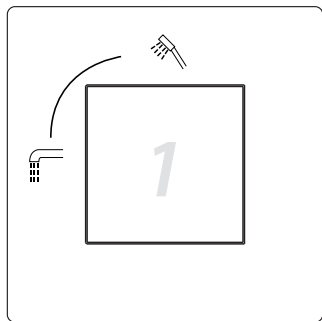
Use a wrench to tighten the hexagonal nut to lock the connecting pipe, install the decorative pipe on the valve core, and then install the decorative panel



Install the adjustment handle and diverter knob, spout and shower bracket respectively, connect the hose and shower head, and fix each part with the provided screws

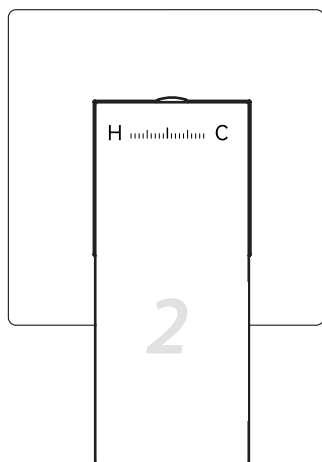
Hydraulic distribution





Handle The 12:00 direction of the diverter is the direction of the hand shower.

- 1 Turn left to switch to faucet mode.



Handle Control the water value through the handle angle

- 2 Turn the control handle to the left to increase the water temperature and to the right to decrease the water temperature

Troubleshooting

If you have followed the instructions carefully and your faucet still does not work properly, take the following coorective steps:

PROBLEM	CAUSE	ACTION
Leakage under the handle	Bonnet nut has come loose	Remove the cover button.Loosen screw with hex wrench . Remove the handle. Unscrew cap (by hand only). Tighten bonnet nut with an adjustable wrench. Remove the cartridge. Check for cracks
Aerator drips or has inconsistent water flow pattern	Aerator is dirty or not seated properly	Unscrew aerator with a coin/ Housing/integrated thread and clean out debris
Water will not shut off completely	Cartridge may need tobe adjusted or replaced	Remove the cover button.Loosen screw with hex wrench. Remove the handle. Unscrew cap (by hand only). Tighten bonnet nut with an adjustable wrench. Remove the cartridge. Check for cracks
Lower flow	The filter washer in thehose connectors or Aerator is dirty	Turn off the water supply at water valve and unscrew the hose connectors from water supply lines. Clean the filter washer in the water lines with hot water, removing any debris or calcium build up.Take off the aerator and clean it with hot water.

Limited Lifetime Warranty

MAXTOR®provides our customers with an extensive warrant as a result of our excellent workmanship and high quality components used in our products.

Limited Lifetime Warranty: All parts of MAXTOR® faucet are warranted to the original consumer purchaser to be free from defects in material and workmanship for as long as the original consumer purchaser owns the home in which the faucet was first installed.

Surface finish warranty: A 5-years warranty is provided for all MAXTOR® faucet finishes to the original purchaser against manufacturing defects in workmanship.

Any labor charges incurred by the purchaser to repair, replace, install or remove this product are not covered by this warranty. MAXTOR Company shall not be liable for any damage to the faucet resulting from reasonable wear and tear, outdoor use, misuse (including use of the product for an unintended application), freezing water, abuse, neglect or improper or incorrectly performed installation, maintenance or repair, including failure to follow the applicable care and cleaning instructions. MAXTOR Company recommends using a professional plumber for all installation and repair.

What You Must Do To Obtain Warranty Service or Replacement Parts:

A warranty claim may be made and replacement parts may be obtained by contacting us by mail or online as follows (please include your model number and date of purchase):

Proof of purchase (original sales receipt) from the original purchaser must be made available to MAXTOR Company.

Or faucet with MAXTOR logo Pictures and "warranty card" picture(Each package with warranty card inside from MAXTOR company).