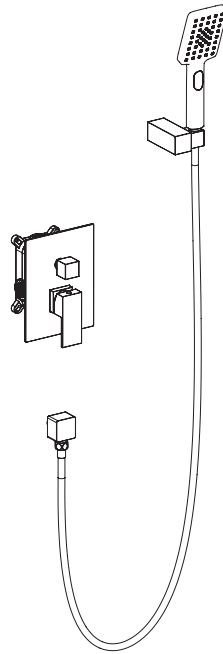


AB502500

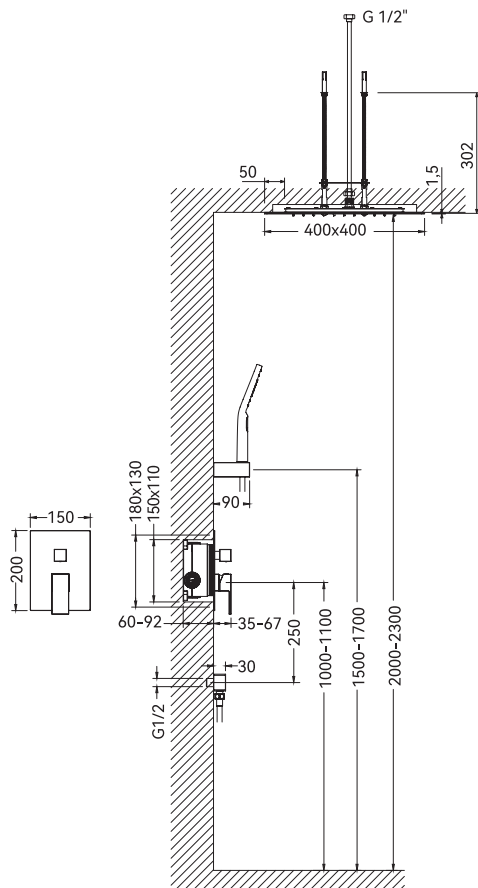
Concealed shower system



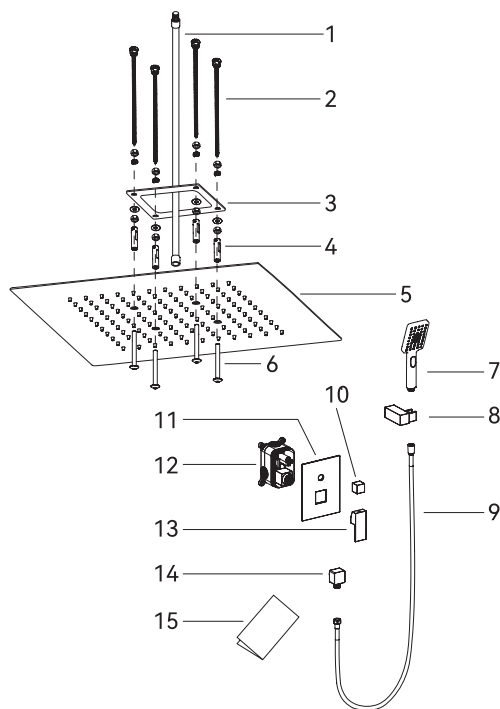
Installation Manual

Installation / User Instructions / Warranty

Dimensions



Parts



1	Eyeliner
2	Mounting screws with nuts
3	Metal plate
4	Threaded couplings
5	Rain shower head
6	Mounting screws
7	Hand watering can
8	Hand watering can holder
9	Shower hose
10	Control knob for the "Hand Shower" and "Tropical Shower" modes
11	Decorative overlay
12	Mixer body
13	Mixer handle
12	Branch with connection shower hose
13	Instructions

Thank you for Choosing MAXTOR



MAXTOR mission is to provide "design & quality that you can count on" bathroom products. MAXTOR's advantages to you: first-class bathroom products, fashion & enduring design, sustainable production and excellent service. MAXTOR's team will stick to our original intention, do a good job in every product, and serve every one of our customers wholeheartedly.

Installation Considerations

- MAXTOR recommends the faucet be installed by a licensed, professional plumber.
- Make sure read over the instructions thoroughly before installation, and you have all tools and supplies needed to complete the installation.
- Be sure to thoroughly flush the supply pipes of dirt and debris.
- Turn off the water supply before commencing work at the stop valve.
- This is the single hole basin faucet, not include deck plate, the deck plate should be bought separately if install the faucet for three holes basin.
- Drain or a pull rod not be included also.
- The hot and cold supply hoses included with this faucet are for use with $\frac{3}{4}$ stops. If your stops are a different size, purchase adapters at your local plumbing supply store or home center. Adapters are not available from MAXTOR.



Care & Cleaning

A damp cloth and mild liquid dishwashing soap may be used, followed by rinsing with water and drying with a soft cloth. Most common household cleaners (including mild abrasives for Brushed Chrome and Platinum) can be used, when used in accordance with the manufacturers' instructions for use. However, all cleaners should be rinsed off thoroughly with water immediately after cleaning your faucet. Avoid using any harsh cleansers (e.g., steel wool or harsh chemicals) or pads/sponges that are unsafe for polished metallic surfaces. Most green, fibrous pads/sponges contain microscopic mineral particles that can scratch a faucet's finish. Cleaner manufacturers may change their formulations at any time; therefore, MAXTOR does not recommend any specific cleaner.

MAXTOR suggests the periodic application of a quality non-abrasive wax, such as car wax or furniture wax, especially for matte or textured finishes (e.g., Brushed gold, brushed Nickel Chrome or Chrome).

Removing Dried Water Spots:

A 50/50 blend of household vinegar and water can also be used for a limited amount of time, followed by rinsing with water and drying with a soft cloth.

Tools Required



Safety glasses



Tape measure



pencil



Adjustable wrench



Phillips screw



Teflon Tape



Level



Silicone



Drill



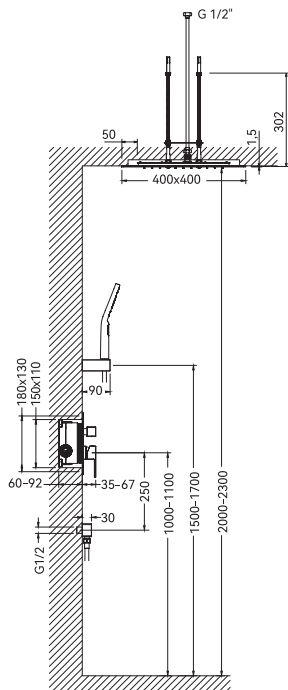
Angle grinder



Installing a concealed shower system is a very complex procedure. Read the instructions carefully!

The pipes are laid before the cladding (usually tiles) is laid; professional plumbers are involved in the work.

Installing a shower system



- Determine the exact installation location of the built-in unit. We recommend installing the block at a height of 1000-1100 mm from the floor level.
- Place the water pipes so that installation and dismantling of the mixer does not cause difficulties.
- Make sure the hot water supply is on the left and the cold water supply is on the right.
- Clean the intake pipes before final installation.
- The block is installed at a depth of 60-92 mm from the outer surface of the wall.
- Secure the mixer unit to the wall with mounting screws.
- Connect the water pipes to the block.
- Determine the exact location of the ceiling shower and connect the water pipe from the mixer to it. We recommend installing a ceiling shower at a height of 2100-2300 mm from the floor level.
- Determine the exact location of the outlet for connecting the shower hose, and connect the water pipe from the mixer to it.
- After installing the tile, apply a waterproof sealant to the edge of the tile.
- Install the decorative trim and press it against the wall.
- Install the diverter handle and mixer control handle.
- Tighten the handles with screws using a hex wrench.
- Install an outlet on the wall to connect the shower hose.
- Screw the hand watering can to the hose, and the hose to the outlet.
- Mount the handheld watering can holder on the wall.



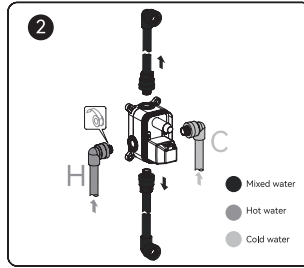
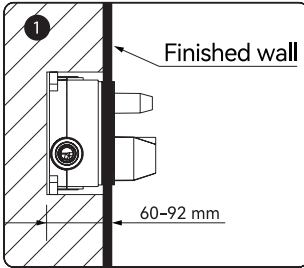
Check connections for leaks.

Check the operation of the mixer before laying the cladding (tiles).

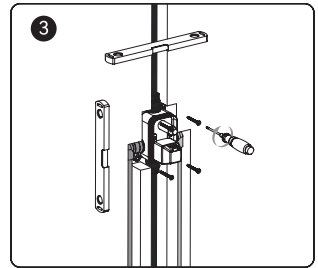


Do not remove the protective cover until all finishing work is completed. This will protect the control unit from dust.

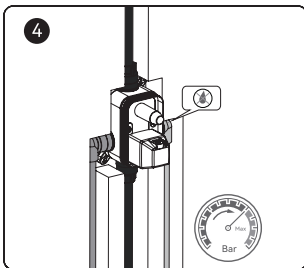
1 ▸ Valve installation instructions



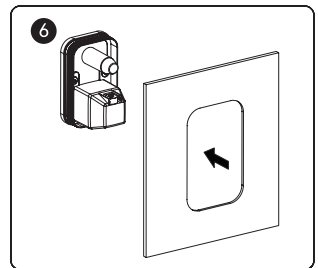
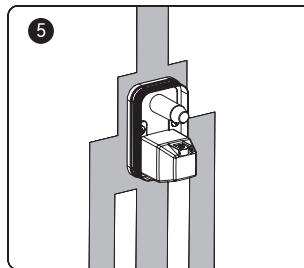
Connect the built-in unit body to the water supply using the appropriate fittings, (C) is the cold water inlet, and (H) is the hot water inlet.



Using a level, install the unit on the wall and mark the position of the mounting tabs (x4), drill holes and attach the built-in unit to the wall using screws and anchors.

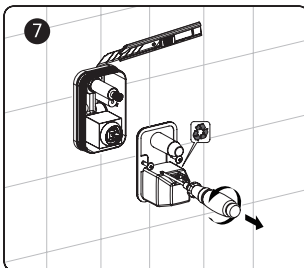


Check all connections for leaks.

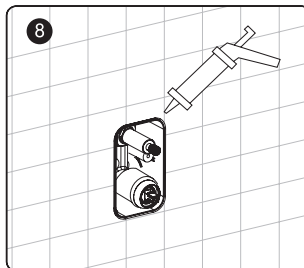


Using the template, cut a hole in the tile, then lay the tile accordingly.

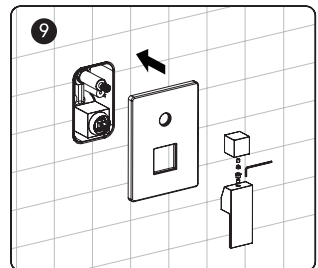
Do not remove the protective cover until all finishing work is completed. This will protect the control unit from dust.



Following the cut line on the box, cut off the overhanging part of the box. Remove the protective cover.



After installing the tile, apply a waterproof sealant to the edge of the tile.



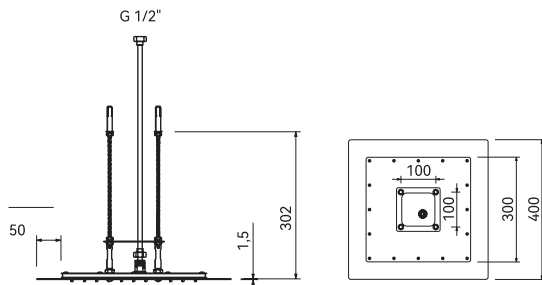
Place the decorative trim on the faucet body.

Place the diverter handle and mixer handle and secure them with hex screws.

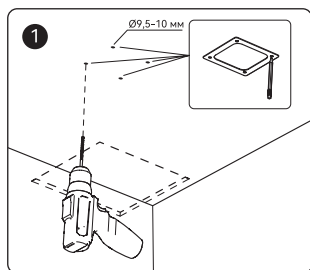
2 ▶ Top shower installation



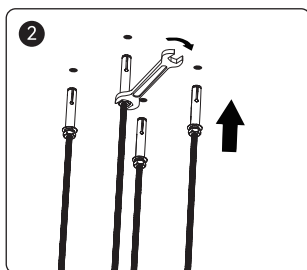
Before installing the ceiling shower, make sure that the ceiling height is sufficient for its installation. The minimum distance between the watering can and the ceiling is 200 mm. The pipes are connected to the ceiling shower head before finishing the ceiling.



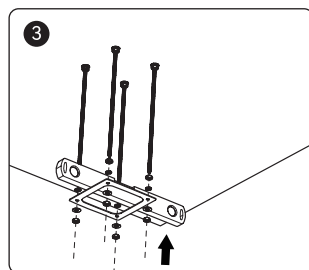
Top shower head instructions



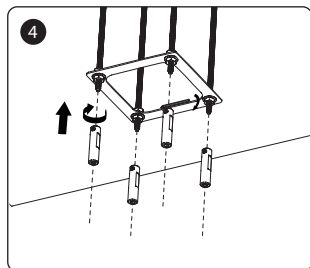
Using the frame of the bracket as a template, scribe a line on the bracket with a pencil and drill a 9.5-10 mm diameter, 50 mm diameter hole where 3aTeM inserts the cable.



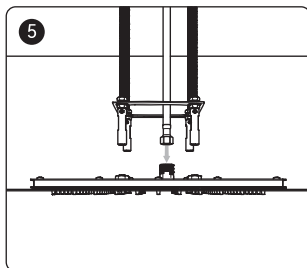
Install the mounting screws.



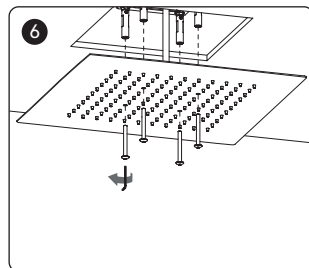
Adjust the height and cut the screws if they are too long.



Assemble the fasteners.

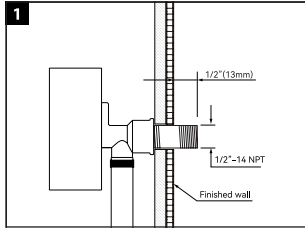


Flush the pipes to prevent debris from getting in inside the shower head attachment. Connect the supply line to the supply pipe. Turn on the faucet and check connection for tightness.



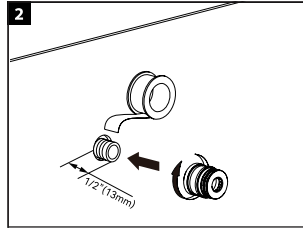
Tighten the mounting screws.

3 ▶ Hand shower holder instructions

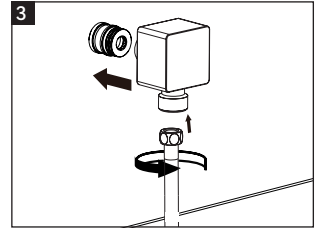


SHUT OFF WATER SUPPLIES.

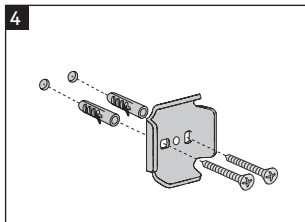
Please note the wall type and thickness before positioning the stringer back plate. Attach the 1/2" NPT nipple (Not supplied) in a manner that allows it to extend 1/2" (13 mm) beyond the finished wall surface.



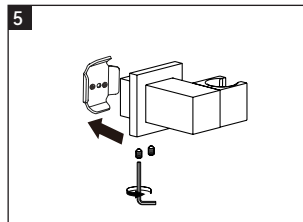
Wrap plumber's tape around the threaded ends of the 1/2" (13 mm) pipe nipple (not provided), then proceed to attach the Quick Connect onto the pipe nipple's threaded end.



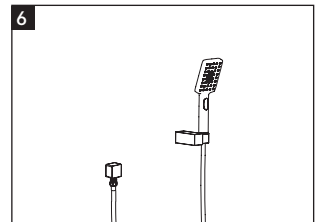
Place the escutcheon over the hand shower holder, then attach the hand shower holder to the quick connect. Secure it in place using the provided Allen key.



After specifying the installation place, mark the place for drilling hole. Drill the hole and then insert the plastic wall anchor into it.

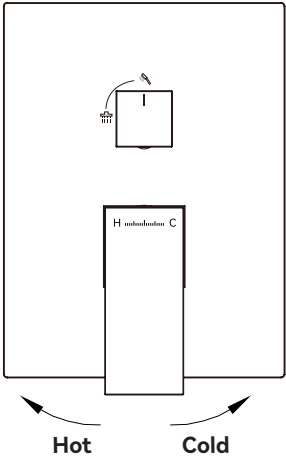


Place the rear holder cover; tighten the screws; and install the shower holder.



Connect the shower head with the flexible hose; and put the rubber washer onto the both ends of the flexible hose to avoid the possible leakage. Then, place the shower head onto the shower holder.

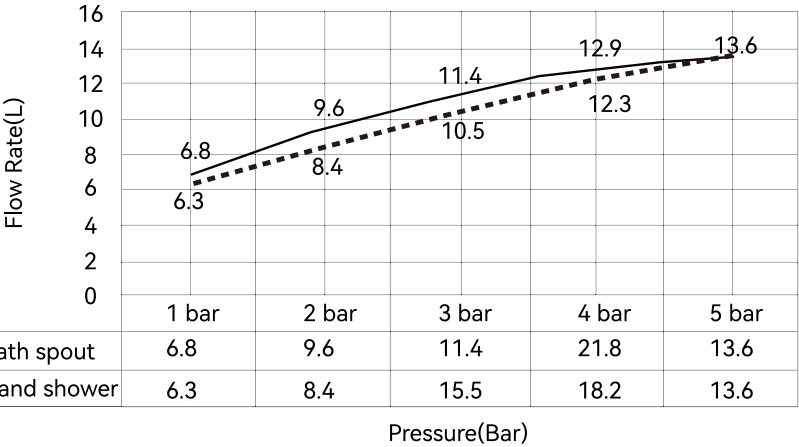
User Instructions



Turn the diverter knob to the 12:00 position to switch to the "hand shower" mode.

Turn the diverter handle counterclockwise 90° to supply water in the "rain shower" mode.

Hydraulic distribution



Troubleshooting

If you have followed the instructions carefully and your faucet still does not work properly, take the following coorective steps:

PROBLEM	CAUSE	ACTION
Leakage under the handle	Bonnet nut has come loose	Remove the cover button.Loosen screw with hex wrench . Remove the handle. Unscrew cap (by hand only). Tighten bonnet nut with an adjustable wrench. Remove the cartridge. Check for cracks
Aerator drips or has inconsistent water flow pattern	Aerator is dirty or not seated properly	Unscrew aerator with a coin/ Housing/integrated thread and clean out debris
Water will not shut off completely	Cartridge may need tobe adjusted or replaced	Remove the cover button.Loosen screw with hex wrench. Remove the handle. Unscrew cap (by hand only). Tighten bonnet nut with an adjustable wrench. Remove the cartridge. Check for cracks
Lower flow	The filter washer in thehose connectors or Aerator is dirty	Turn off the water supply at water valve and unscrew the hose connectors from water supply lines. Clean the filter washer in the water lines with hot water, removing any debris or calcium build up.Take off the aerator and clean it with hot water.

Limited Lifetime Warranty

MAXTOR® provides our customers with an extensive warrant as a result of our excellent workmanship and high quality components used in our products.

Limited Lifetime Warranty: All parts of MAXTOR® faucet are warranted to the original consumer purchaser to be free from defects in material and workmanship for as long as the original consumer purchaser owns the home in which the faucet was first installed.

Surface finish warranty: A 5-years warranty is provided for all MAXTOR® faucet finishes to the original purchaser against manufacturing defects in workmanship.

Any labor charges incurred by the purchaser to repair, replace, install or remove this product are not covered by this warranty. MAXTOR Company shall not be liable for any damage to the faucet resulting from reasonable wear and tear, outdoor use, misuse (including use of the product for an unintended application), freezing water, abuse, neglect or improper or incorrectly performed installation, maintenance or repair, including failure to follow the applicable care and cleaning instructions. MAXTOR Company recommends using a professional plumber for all installation and repair.

What You Must Do To Obtain Warranty Service or Replacement Parts:

A warranty claim may be made and replacement parts may be obtained by contacting us by mail or online as follows (please include your model number and date of purchase):

Proof of purchase (original sales receipt) from the original purchaser must be made available to MAXTOR Company.

Or faucet with MAXTOR logo Pictures and "warranty card" picture(Each package with warranty card inside from MAXTOR company).

