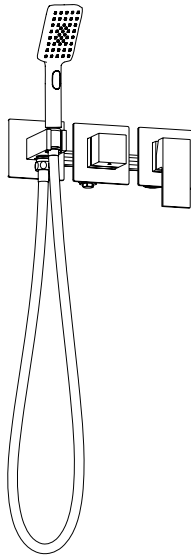
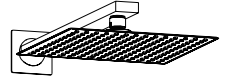
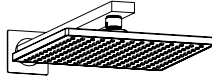
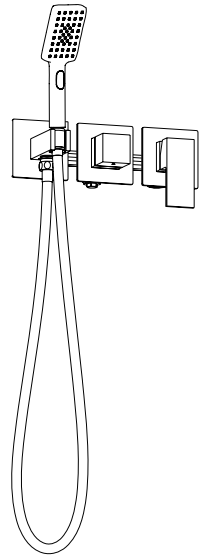


Concealed shower system

AH502000, AH502100



AH502000



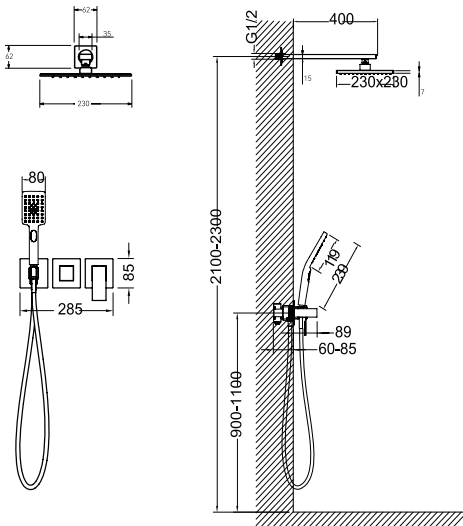
AH502100

Installation Manual

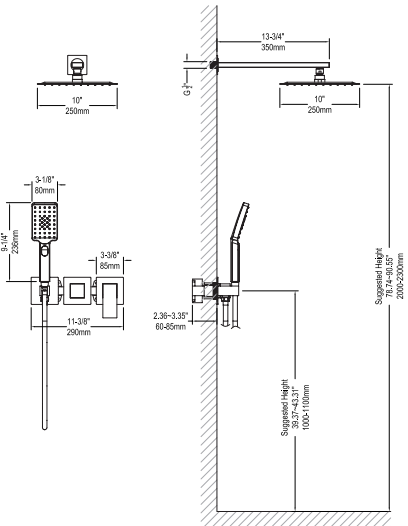
Installation / User Instructions / Warranty

Dimensions

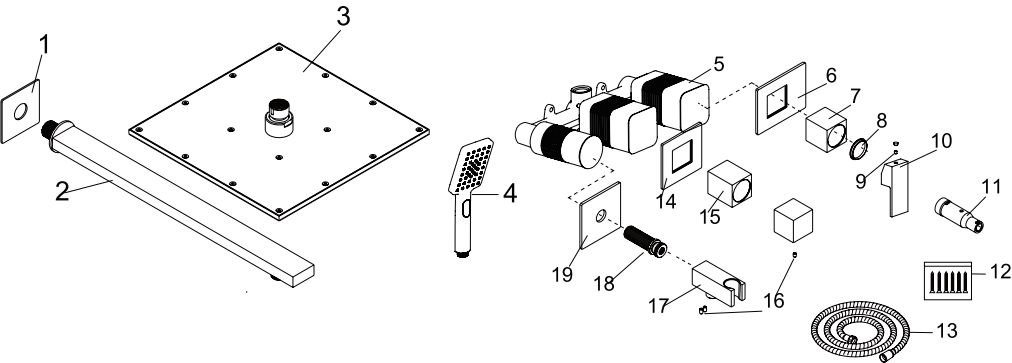
AH502000



AH502100



Parts



1	Decorative cover	8	Decorative ring	15	Decoration Set
2	Shower Arm	9	Hexagonal set screw	16	Hexagonal set screw
3	Rain shower head	10	Handle	17	Handheld Bracket
4	Handheld Shower	11	Wrench	18	Connecting pipe
5	Mixed water body	12	Fixing screw	19	C Decorative panels
6	A Decorative panels	13	Shower hose	20	Instructions
7	Decoration Set	14	B Decorative panels		

Thank you for Choosing MAXTOR



MAXTOR mission is to provide "design & quality that you can count on" bathroom products. MAXTOR's advantages to you: first-class bathroom products, fashion & enduring design, sustainable production and excellent service. MAXTOR's team will stick to our original intention, do a good job in every product, and serve every one of our customers wholeheartedly.

Installation Considerations

- MAXTOR recommends the faucet be installed by a licensed, professional plumber.
- Make sure read over the instructions thoroughly before installation, and you have all tools and supplies needed to complete the installation.
- Be sure to thoroughly flush the supply pipes of dirt and debris.
- Turn off the water supply before commencing work at the stop valve.
- This is the single hole basin faucet, not include deck plate, the deck plate should be bought separately if install the faucet for three holes basin.
- Drain or a pull rod not be included also.
- The hot and cold supply hoses included with this faucet are for use with $\frac{3}{4}$ stops. If your stops are a different size, purchase adapters at your local plumbing supply store or home center. Adapters are not available from MAXTOR.



Care & Cleaning

A damp cloth and mild liquid dishwashing soap may be used, followed by rinsing with water and drying with a soft cloth. Most common household cleaners (including mild abrasives for Brushed Chrome and Platinum) can be used, when used in accordance with the manufacturers' instructions for use. However, all cleaners should be rinsed off thoroughly with water immediately after cleaning your faucet. Avoid using any harsh cleansers (e.g., steel wool or harsh chemicals) or pads/sponges that are unsafe for polished metallic surfaces. Most green, fibrous pads/sponges contain microscopic mineral particles that can scratch a faucet's finish. Cleaner manufacturers may change their formulations at any time; therefore, MAXTOR does not recommend any specific cleaner.

MAXTOR suggests the periodic application of a quality non-abrasive wax, such as car wax or furniture wax, especially for matte or textured finishes (e.g., Brushed gold, brushed Nickel Chrome or Chrome).

Removing Dried Water Spots:

A 50/50 blend of household vinegar and water can also be used for a limited amount of time, followed by rinsing with water and drying with a soft cloth.

Tools Required



Safety glasses



Tape measure



pencil



Adjustable wrench



Phillips screw



Teflon Tape



Level



Silicone



Drill



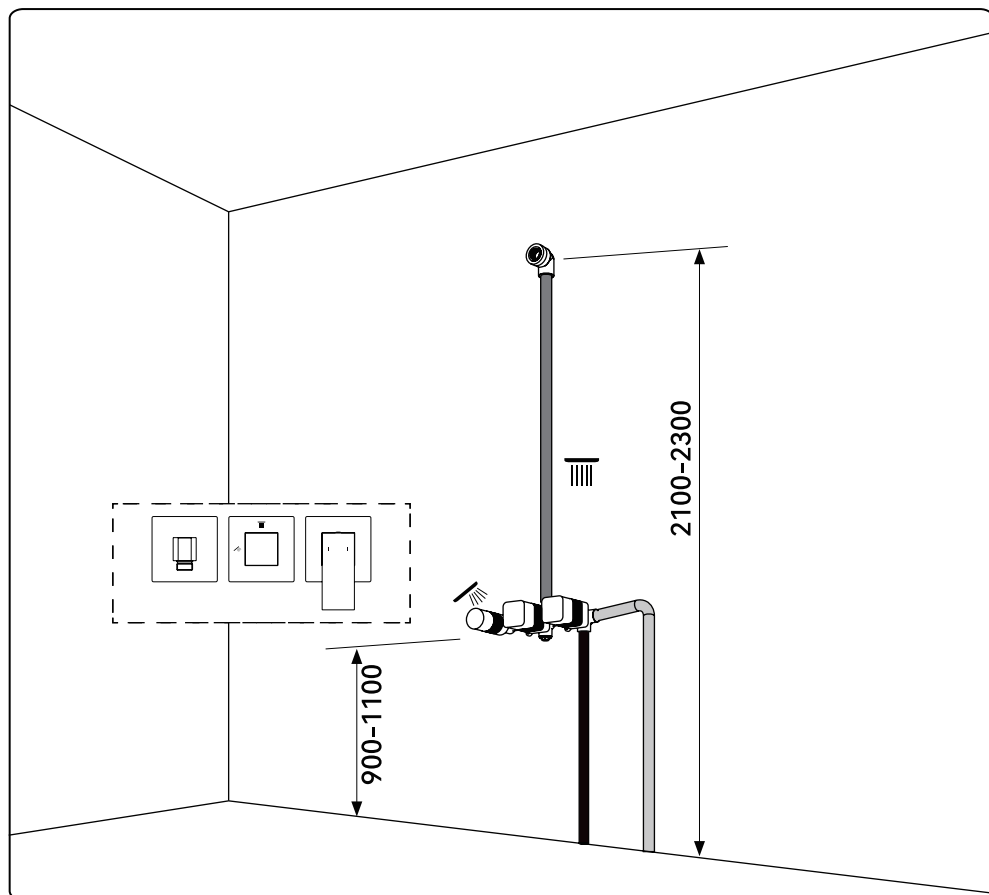
Angle grinder



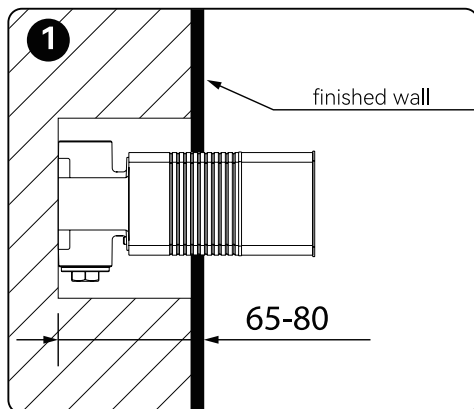
Installing a concealed shower system is a very complex procedure. Read the instructions carefully!

The pipes are laid before the cladding (usually tiles) is laid; professional plumbers are involved in the work.

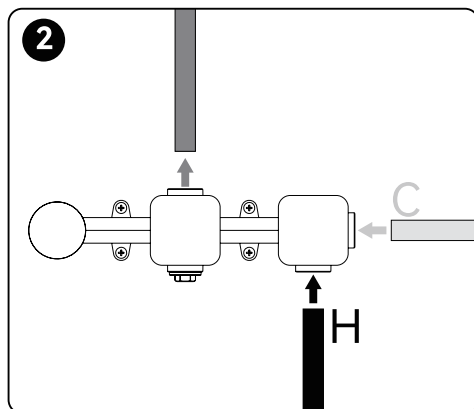
Installing a shower system



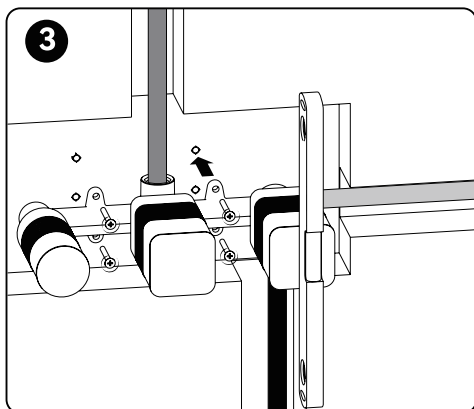
1 ▶ Valve installation instructions



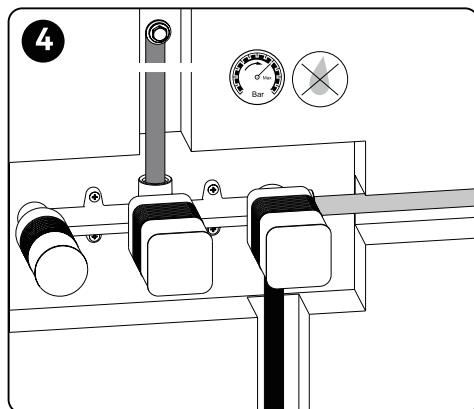
The shower valve body is installed at a depth of 65-80 mm from the outer surface of the wall.



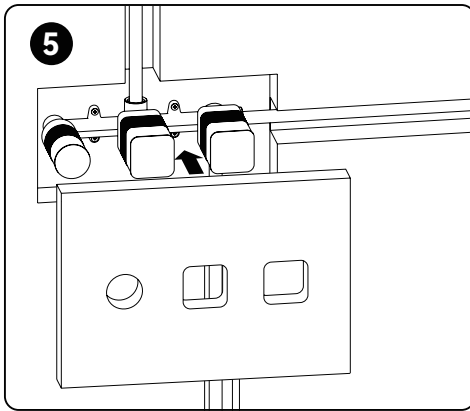
Connect the main body of the built-in unit to the water supply system using the appropriate fittings, (C) for the cold water inlet and (H) for the hot water inlet.



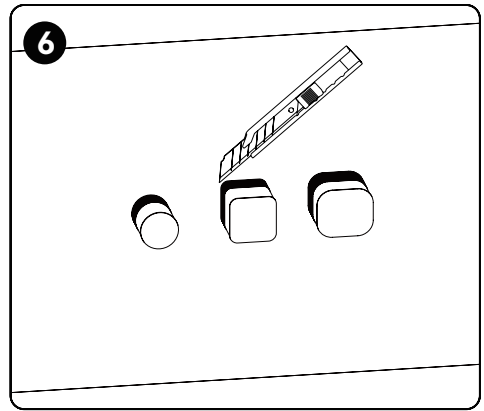
Use a level to ensure that the water mixing body is installed level, drill the corresponding fixing holes, and fix it with screws.



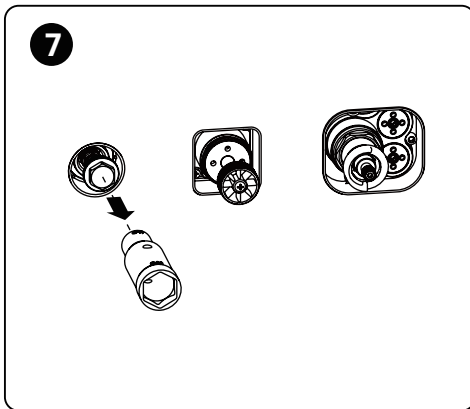
Check that all connections are tight and ensure there are no leaks.



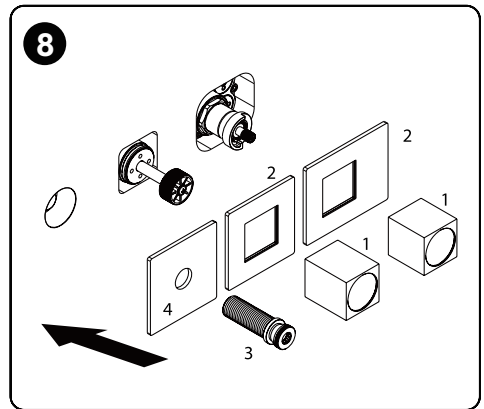
Using the template, cut a hole in the tile, then lay the tile accordingly. Do not remove the protective covers from the faucet unit until finishing work is completed. This will protect the control unit from dust.



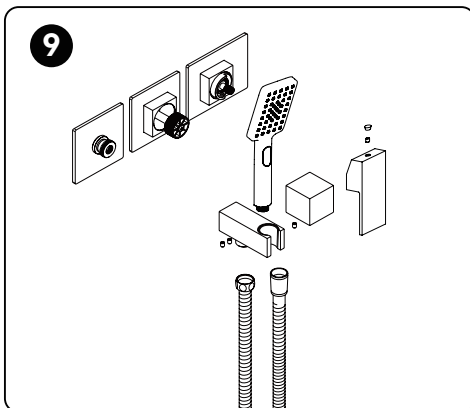
Cut off the protrusion along the tangent line on the box.



Use the wrench provided to remove the protective plug.



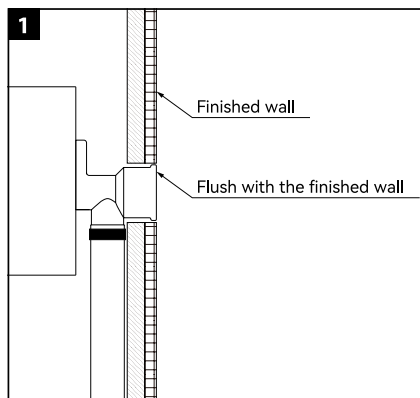
According to the figure, install the decorative panel, decorative sleeve and connecting pipe in the appropriate position. If there is an etching on the front of the decorative panel, make sure it is placed in the correct position.



Install the mixer handle and shunt control knob.

Connect the shower bracket with the quick connect pipe and adjust it to the appropriate position. Screw the shower hose onto the stand and the hand shower onto the hose.

2 ► Hower head and shower arm instructions

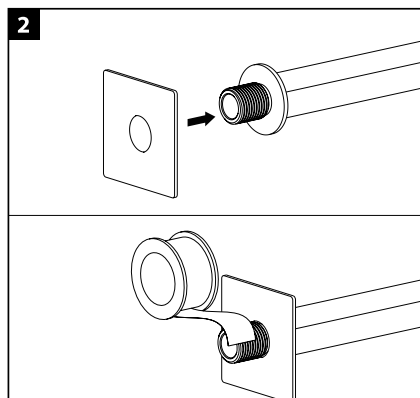


SHUT OFF WATER SUPPLIES.

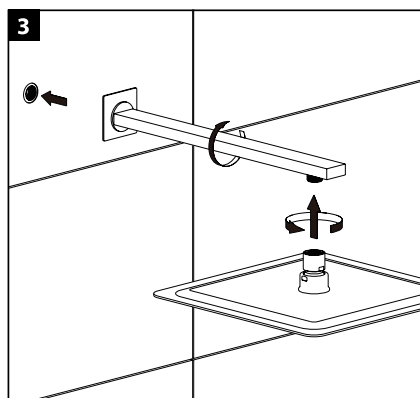
Consider the type and the thickness of your finished wall before placing your stringer back plate.

Install the threaded adapter (Not Supplied) so the surface of the finished wall is flush with the front of the threaded adapter.

Make sure that 1/2" threaded adapter is installed securely inside the wall.

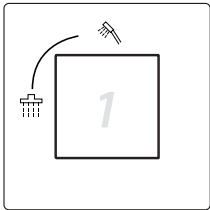


Slide escutcheon over shower arm, and apply Teflon tape onto male threads.



Screw the shower arm into threaded adapter. Screw the shower head onto the shower arm and tighten with an adjustable wrench.

User Instructions

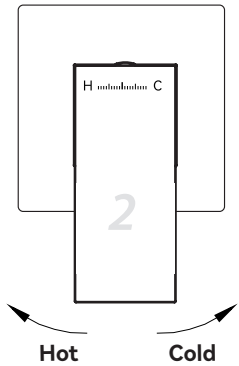


Handle

1

The 12:00 direction of the diverter is the direction of the hand shower.

Turn left to switch to the overhead shower



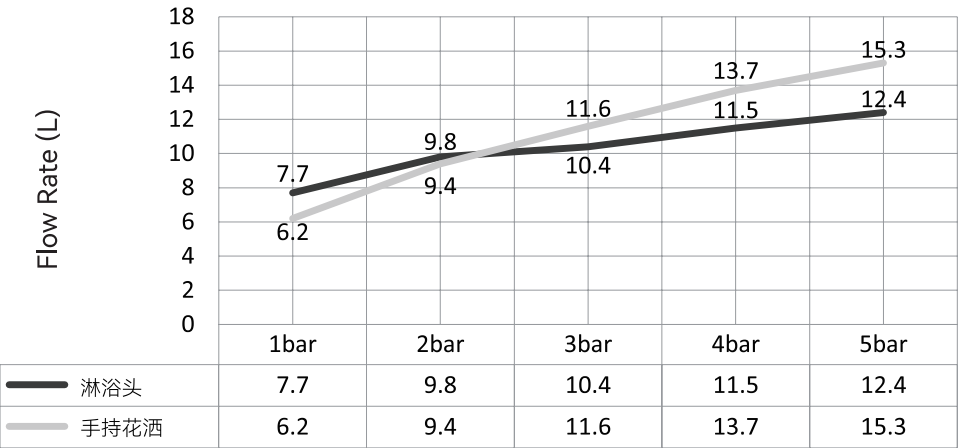
Handle

2

Control the water value through the handle angle.

Turn the control handle to the left to increase the water temperature and to the right to decrease the water temperature

Hydraulic distribution



Pressure (Bar)

Troubleshooting

If you have followed the instructions carefully and your faucet still does not work properly, take the following coorective steps:

PROBLEM	CAUSE	ACTION
Leakage under the handle	Bonnet nut has come loose	Remove the cover button.Loosen screw with hex wrench . Remove the handle. Unscrew cap (by hand only). Tighten bonnet nut with an adjustable wrench. Remove the cartridge. Check for cracks
Aerator drips or has inconsistent water flow pattern	Aerator is dirty or not seated properly	Unscrew aerator with a coin/ Housing/integrated thread and clean out debris
Water will not shut off completely	Cartridge may need tobe adjusted or replaced	Remove the cover button.Loosen screw with hex wrench. Remove the handle. Unscrew cap (by hand only). Tighten bonnet nut with an adjustable wrench. Remove the cartridge. Check for cracks
Lower flow	The filter washer in thehose connectors or Aerator is dirty	Turn off the water supply at water valve and unscrew the hose connectors from water supply lines. Clean the filter washer in the water lines with hot water, removing any debris or calcium build up.Take off the aerator and clean it with hot water.

Limited Lifetime Warranty

MAXTOR® provides our customers with an extensive warrant as a result of our excellent workmanship and high quality components used in our products.

Limited Lifetime Warranty: All parts of MAXTOR® faucet are warranted to the original consumer purchaser to be free from defects in material and workmanship for as long as the original consumer purchaser owns the home in which the faucet was first installed.

Surface finish warranty: A 5-years warranty is provided for all MAXTOR® faucet finishes to the original purchaser against manufacturing defects in workmanship.

Any labor charges incurred by the purchaser to repair, replace, install or remove this product are not covered by this warranty. MAXTOR Company shall not be liable for any damage to the faucet resulting from reasonable wear and tear, outdoor use, misuse (including use of the product for an unintended application), freezing water, abuse, neglect or improper or incorrectly performed installation, maintenance or repair, including failure to follow the applicable care and cleaning instructions. MAXTOR Company recommends using a professional plumber for all installation and repair.

What You Must Do To Obtain Warranty Service or Replacement Parts:

A warranty claim may be made and replacement parts may be obtained by contacting us by mail or online as follows (please include your model number and date of purchase):

Proof of purchase (original sales receipt) from the original purchaser must be made available to MAXTOR Company.

Or faucet with MAXTOR logo Pictures and "warranty card" picture(Each package with warranty card inside from MAXTOR company).

