



KFB2022MB

Installation Manual

Two-Handle Single-Hole Kitchen Faucet

-
- *MAXTOR* recommends the faucet be installed by a licensed, professional plumber.
 - Make sure read over the instructions thoroughly before installation, and you have all tools and supplies needed to complete the installation.
 - Be sure to thoroughly flush the supply pipes of dirt and debris.
 - Turn off the water supply before commencing work at the stop valve.
 - This is the single hole basin faucet, not include deck plate, the deck plate should be bought separately if install the faucet for three holes basin.
 - Drain or a pull rod not be included also.
 - The hot and cold supply hoses included with this faucet are for use with $\frac{3}{8}$ stops. If your stops are a different size, purchase adapters at your local plumbing supply store or home center. Adapters are not available from *MAXTOR*.



For warranty or additional information

Pour renseignements sur la garantie ou autre information :

Para saber más sobre la garantía u obtener información adicional:

Tools Required



Phillips Screw driver



Adjustable Wrench



Teflon Tape

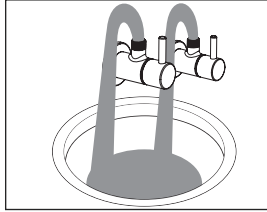


Bucket

Installation Steps

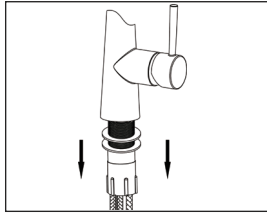
1.▼

Remark: First install, be sure to thoroughly flush the supply pipes of dirt and debris. Turn Off the angle valves after flush (Remove the old faucet), clean the mounting surface.



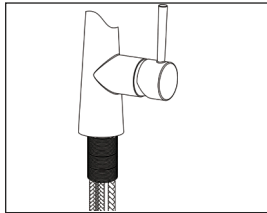
2.▼

Remove the rubber pad, metal pad and the locknut from main screw tube.



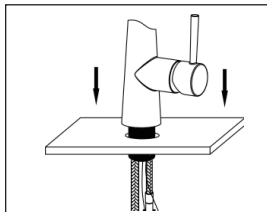
3.▼

Make sure the main screw tube is fixed before installation.



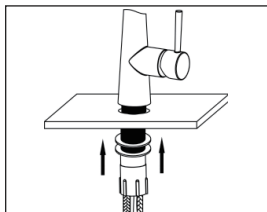
4.▼

Place the faucet body into the faucet hole of the deck/sink. A standard 35mm hole is required for this faucet.



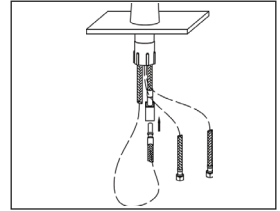
5.▼

Install the rubber pad, metal pad, fix by main body fixing nut.



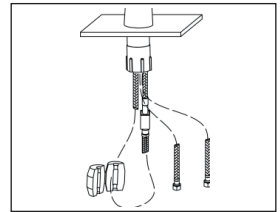
6.▼

Attach the motion hose to the connection hose by screwing with an adjustable wrench or plier.



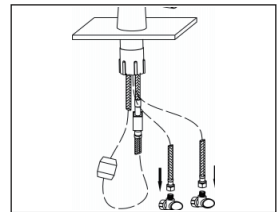
7.▼

Take out the hose weight, slide it on the motion hose.



8.▼

Screw the female ends of the connecting hoses to the corresponding hot and cold water supply valves by using an adjustable wrench or plier.



9.▼

Inlet hose connection angle valve.

